



**Junior
Achievement™**
of the Bluegrass

**Engaging Education Today.
Bright Futures For Tomorrow.**



2024 ANNUAL REPORT



JA BizTown® | JA Finance Park®

Inspiring and preparing young people to succeed in a global economy.



FINANCIAL LITERACY

It's crucial for students to understand money management so they can make informed decisions, avoid debt, and achieve financial stability.



WORK READINESS

Learning work readiness skills helps students prepare for their future by developing crucial skills such as communication, problem-solving, and adaptability.



ENTREPRENEURSHIP

Studies show that entrepreneurs are responsible for creating 2 out of every 3 new jobs. Entrepreneurial education develops vital skills like creativity, strategic thinking, and resilience.

As we reflect upon the past year, we are struck by the generous support of our partners in education, business, and the community who share our passion for ensuring that young people have the tools they need to build the careers and futures they want.

Junior Achievement programs empower children to solve problems, think critically, and become engaged members of their community so they are excited for the future and know how to reach their dreams. By working together, we are creating a world where young people have the skillset and mindset to build thriving communities.

Each year, we strive to expand our reach, and we were able to serve even more students in 2023-2024 than we did the previous year. Our JA programs were delivered to 26,345 students by corporate and community volunteers and provided relevant, hands-on experiences for students from kindergarten through high school.

Junior Achievement of the Bluegrass has been educating K-12 students about entrepreneurship, work readiness and financial literacy since 1963. Through our experiential, hands-on programs and in-class curriculum, we develop and nurture young learners with real-world experiences.

We are deeply grateful for all the support we receive from the communities we serve. We remain committed to supporting educators and partnering with the community to empower students across our region. Thank you to each of you for sharing our mission to provide engaging education today and bright futures for tomorrow.

Laurel Raimondo Martin, PhD
President, JA of the Bluegrass, Inc.

WHO WE SERVED 2023-2024

26,345
STUDENTS

**received JA of the
Bluegrass programming
in 2023-2024**

21

COUNTIES
IN THE COMMONWEALTH
& WEST VIRGINIA

5,604
STUDENTS

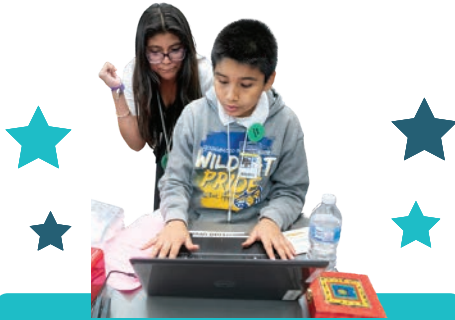
**participated in
JA BizTown or
JA Finance Park**

JA Classes

Instructional Hours



Junior Achievement offers a variety of proven experiential educational models which align with national and state standards. Lessons are delivered by volunteers in the community and are designed for students in grades K through 12.



JA prepares students for Work & Careers

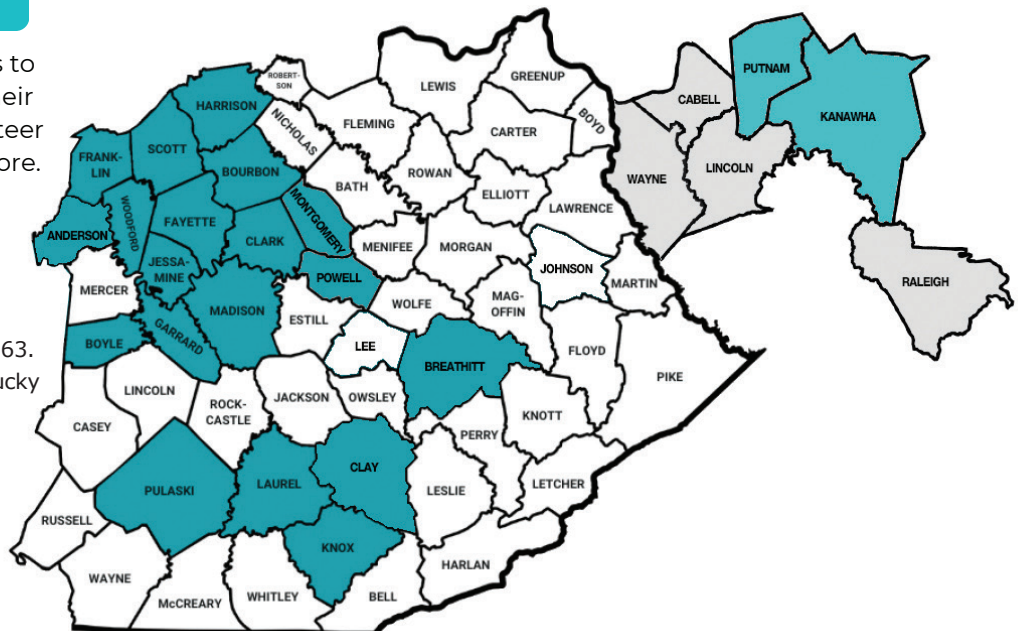
COMMUNITY SCHOOLS

JA offers exceptional opportunities to engaging families proactively in their students' education through volunteer hours, take home resources, and more.

Junior Achievement of the Bluegrass

has been serving Central Kentucky since 1963. Our area encompasses 56 counties in Kentucky as well as six counties in West Virginia.

The **JA BizTown/JA Finance Park** facility is available to students throughout Central Kentucky.



Program Spotlights

JA Miss Business

JA Miss Business connects businesswomen and outstanding female high school students to celebrate successes, develop talents, and explore new opportunities. The event celebrates the power of women at various ages and stages of life and inspires participants with grow their network, increase their confidence to further their educational and career goals.



In Fayette County, young women were able to learn interview tips and tricks before participating in a mock interview. One hundred amazing women from across the community came out to help make this experience possible.

This past year, we held our fifth annual JA Miss Business event at the UK Federal Credit Union Corporate Office which allowed us to grow the event to 100 student participants. We also hosted an inaugural event in Laurel County.

Through interactive student/mentor activities, the event stays true to the hands-on JA philosophy of providing real-world experiences that help inspire youth to plan for their futures. JA empowers female high school students through a transformative learning and mentorship experience and strives to inspire the next generation of women leaders.

The 2024 event was presented by UK Federal Credit Union.



Leadership Lexington Youth Program

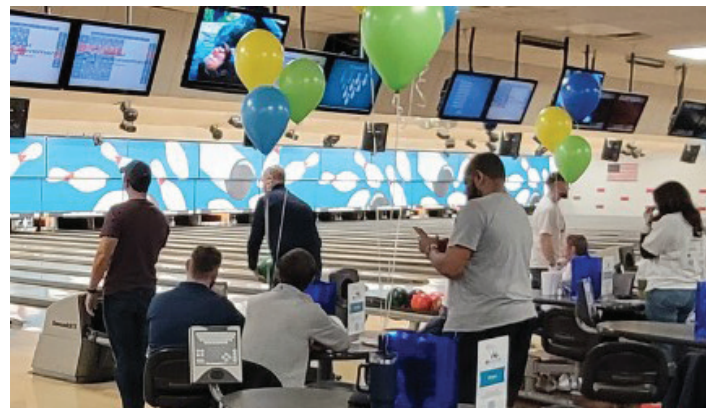
The Leadership Lexington Youth Program is a ten-month leadership development program for high school juniors in Fayette County. The program gives participants the opportunity to better understand our city's opportunities and challenges by meeting with and learning from today's leaders. This educational opportunity broadens perspectives and allows participants to gain increased understanding of community dynamics and public issues. For the past few years, we have received over 100 applications for the 45 available spots in the class each year.

The 2023-2024 program was presented by UK Healthcare.

Bowl-A-Thon

First held in 1968, the Bowl A Thon provides companies with a fun and informal social event where bowlers can have fun with co-workers, enjoy free pizza and drinks, and win prizes while benefiting Junior Achievement of the Bluegrass.

The 2024 event gave participants a chance to interact in a fun environment while joining with other companies that actively support JA' mission to educate our future workforce. Funds raised during this event allow us to provide our programs at little or no cost to our educators and their students.



The logo for the JA Stock Market Challenge. It features the letters "JA" in large green font, followed by the Junior Achievement logo (a blue and white geometric design) and the text "Junior Achievement™" in blue. Below this, the words "STOCK MARKET" are written in large green letters, and "CHALLENGE" is written in blue at the bottom. A small stock market candlestick chart is positioned to the right of the word "STOCK".

After completing the classroom curriculum, students and educators were invited to compete in our inaugural **JA Stock Market Challenge** event, where students compete by investing and trading shares from fictitious companies, creating draft portfolios as teams, and finalizing their stock selections to accumulate the highest possible net worth in their investment portfolio by the close of trading.



The image shows a large digital display of a stock market exchange board. The display is divided into several sections. At the top right, there is a header for 'DAY 5'. Below this, the main section is titled 'STOCK MARKET EXCHANGE BOARD'. It lists various stocks with their current prices, daily changes, and percentage changes. The stocks listed include 'Dow Jones Industrial', 'S&P 500', 'NASDAQ Composite', 'NYSE Composite', 'NYSE-100', 'NYSE-200', 'NYSE-300', 'NYSE-400', 'NYSE-500', 'NYSE-600', 'NYSE-700', 'NYSE-800', 'NYSE-900', 'NYSE-1000', 'NYSE-1100', 'NYSE-1200', 'NYSE-1300', 'NYSE-1400', 'NYSE-1500', 'NYSE-1600', 'NYSE-1700', 'NYSE-1800', 'NYSE-1900', 'NYSE-2000'. The display also shows a 'Market Change Rate' section at the bottom, which includes a 'Market Change Rate' and a 'Market Change Rate'.

STOCK	PRICE	DAILY CHANGE	CHANGE %	LAST 5	LAST 10	LOW	HIGH
Dow Jones Industrial	11,041	Red	+0.01%	10,912	10,912	\$ 1,146.41	\$ 1,146.41
S&P 500	1,087.5	Red	+0.01%	1,087.5	1,087.5	\$ 108.75	\$ 108.75
NASDAQ Composite	1,121.34	Red	+0.01%	1,121.34	1,121.34	\$ 1,121.34	\$ 1,121.34
NYSE Composite	1,121.34	Red	+0.01%	1,121.34	1,121.34	\$ 1,121.34	\$ 1,121.34
NYSE-100	1,121.34	Red	+0.01%	1,121.34	1,121.34	\$ 1,121.34	\$ 1,121.34
NYSE-200	1,121.34	Red	+0.01%	1,121.34	1,121.34	\$ 1,121.34	\$ 1,121.34
NYSE-300	1,121.34	Red	+0.01%	1,121.34	1,121.34	\$ 1,121.34	\$ 1,121.34
NYSE-400	1,121.34	Red	+0.01%	1,121.34	1,121.34	\$ 1,121.34	\$ 1,121.34
NYSE-500	1,121.34	Red	+0.01%	1,121.34	1,121.34	\$ 1,121.34	\$ 1,121.34
NYSE-600	1,121.34	Red	+0.01%	1,121.34	1,121.34	\$ 1,121.34	\$ 1,121.34
NYSE-700	1,121.34	Red	+0.01%	1,121.34	1,121.34	\$ 1,121.34	\$ 1,121.34
NYSE-800	1,121.34	Red	+0.01%	1,121.34	1,121.34	\$ 1,121.34	\$ 1,121.34
NYSE-900	1,121.34	Red	+0.01%	1,121.34	1,121.34	\$ 1,121.34	\$ 1,121.34
NYSE-1000	1,121.34	Red	+0.01%	1,121.34	1,121.34	\$ 1,121.34	\$ 1,121.34
NYSE-1100	1,121.34	Red	+0.01%	1,121.34	1,121.34	\$ 1,121.34	\$ 1,121.34
NYSE-1200	1,121.34	Red	+0.01%	1,121.34	1,121.34	\$ 1,121.34	\$ 1,121.34
NYSE-1300	1,121.34	Red	+0.01%	1,121.34	1,121.34	\$ 1,121.34	\$ 1,121.34
NYSE-1400	1,121.34	Red	+0.01%	1,121.34	1,121.34	\$ 1,121.34	\$ 1,121.34
NYSE-1500	1,121.34	Red	+0.01%	1,121.34	1,121.34	\$ 1,121.34	\$ 1,121.34
NYSE-1600	1,121.34	Red	+0.01%	1,121.34	1,121.34	\$ 1,121.34	\$ 1,121.34
NYSE-1700	1,121.34	Red	+0.01%	1,121.34	1,121.34	\$ 1,121.34	\$ 1,121.34
NYSE-1800	1,121.34	Red	+0.01%	1,121.34	1,121.34	\$ 1,121.34	\$ 1,121.34
NYSE-1900	1,121.34	Red	+0.01%	1,121.34	1,121.34	\$ 1,121.34	\$ 1,121.34
NYSE-2000	1,121.34	Red	+0.01%	1,121.34	1,121.34	\$ 1,121.34	\$ 1,121.34

Market Change Rate: 1,121.34

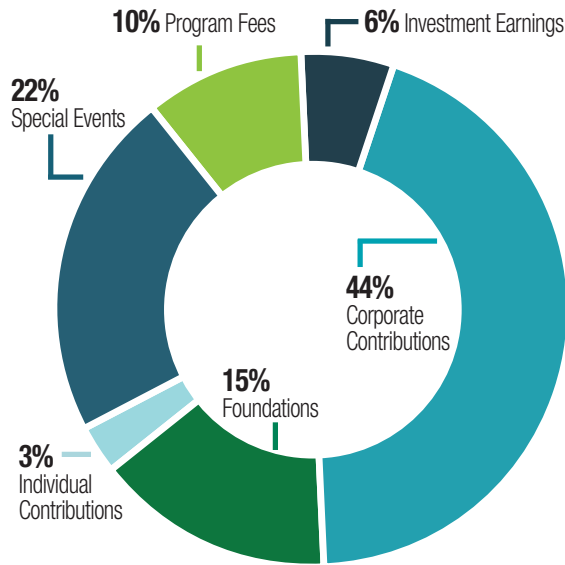


This unique and dynamic event had community members coming together for a night of fun and friendly competition, all while supporting important education for students while participating in this one-of-a-kind evening.

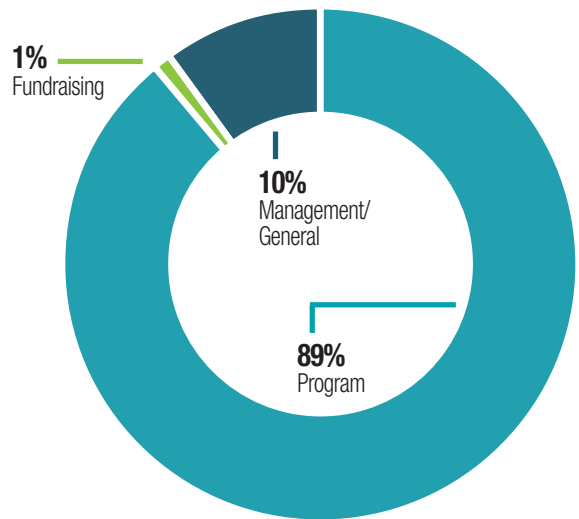


FINANCIAL OVERVIEW

2023-2024 REVENUE



2023-2024 EXPENSES



2023-2024 CONTRIBUTORS (\$1000 and above)

\$25,000-\$49,999

Taco Bell Foundation
Toyota Motor Mfg. Kentucky, Inc.
Toyota Motor Mfg. West Virginia, Inc.

\$20,000-\$24,999

The Beaufort Bonnet Company
Fayette County Public Schools
State Farm Foundation
UK Healthcare Development

\$10,000-\$19,999

Anonymous
Bakhaus Family Foundation
CHI Saint Joseph Health
Chick-fil-A
Davis H. Elliot Company, Inc.
Family of Michael and Susan Rogers
Forcht Group of Kentucky
Friends of Coal
Keeneland Association, Inc
Kentucky Society of CPAs
Kentucky Utilities
MiddleGround Capital
The UPS Store
University of Kentucky

\$5,000-\$9,999

Ball Homes, Inc.
Central Bank & Trust

Community Trust Bank
Crowe, Inc.
Justin Posey
Kentucky Utilities
Knox County Public Schools
Lex18
Lexmark International
OneMain Financial LLC
PNC Bank
R.J. Corman Railroad Group, LLC
Republic Bank & Trust
Scott County Public Schools
The Honorable Order of Kentucky Colonels
Traditional Bank
Quantrell Auto Group

\$1,000-\$4,999

Alex G. Campbell Foundation
Alltech
Anderson County Middle School
Andrew Peterman
Athens-Chilesburg Elementary School
Baird Private Wealth Management
Blue Grass Community Foundation
Brad Lovell
Buffalo Trace Distillery
City National Bank

Community Trust Bank
Dean Dorton
Debra Hensley
Fidelity Investments
Glenn Leveridge
Greer Companies
Hilary Boone Foundation, Inc.
Jean Hale
Jordan Wilson
Junior League of Lexington, Inc.
Kentucky American Water Company
Kentucky Bar Foundation, Inc.
Kentucky Community & Technical College System
Lexington Christian Academy
Lexington Fayette Housing Authority

Drs. Mary Lynne & Eli Capilouto
National Christian Foundation Kentucky
The Orphan Society of Lexington
Pulaski County Public Schools
R.J. Corman Railroad Group, LLC
Randy Shaw
Farley Stephenson
Rosenthal Family Foundation
Scott Navis
Stablemate Creative LLC
Stock Yards Bank & Trust
Todd Ziegler
Truist
UK Federal Credit Union
UMR



PARTNERS & SPONSORS

Our ability to impact students in meaningful ways is directly tied to support from our partners, which often comes in the shape of financial investments, employee engagement, and leadership on our board of directors. We are so grateful for their support and it inspires us to continue our work in transforming financial literacy, work readiness, and entrepreneurship education.

Adopt-A-School Partners

GOLD

The Beaufort Bonnet Company (3 years)
Arlington, Booker T. Washington, William Wells
Brown and Mary Todd Elementary Schools

JA Board of Directors (22 years)
Tates Creek Elementary and Tates Creek MS

Toyota Motor Manufacturing KY (21 years)
Scott County Schools

SILVER

Ann Bakhaus (23 years)
Garden Springs Elementary

Community Trust Bank (17 years)
Frederick Douglass High School

Crowe LLP (15 years)
Jessie Clark MS

Davis H. Elliot Company (14 years)
Athens Chilesburg Elementary

Lexmark International (23 years)
Yates Elementary

Kentucky Utilities (19 years)
Liberty Elementary

Quantrell Auto Group (20 years)
Northern Elementary

Republic Bank (2 years)
Lansdowne Elementary

Traditional Bank (15 years)
Leestown MS and Northern Elementary

JA BizTown/JA Finance Park

STOREFRONT PARTNERS

Anonymous	Kentucky Utilities
Chick-fil-A	LEX 18
CHI Saint Joseph	Lexington Herald-Leader
Health	MiddleGround Capital
Forcht Bank	Toyota Motor
Friends of Coal	Manufacturing KY
Keeneland	UK Healthcare
Kentucky Society	University of Kentucky
of CPAs	

COMMUNITY ROOM PARTNER

Marksbury Family Foundation

LOBBY PARTNERS

The Family of Michael & Susan Rogers
Fayette Alliance
Fayette County Farm Bureau Federation
Godolphin
Keene Ridge Farm

PAVILION PARTNER

Commercial Property Association of Lexington

FACILITY PARTNER

Fayette County Public Schools

AMENITY PARTNERS

Davis H. Elliot Company
Lexington Legends

PAVILION BEAM SPONSOR

Community Trust Bank

Financial Literacy & Curriculum Partners

Bechtel Parsons Bluegrass
Fayette County Public Schools
Honorable Order of Kentucky Colonels
Kentucky American Water
PNC Bank
The UPS Store
State Farm Foundation
Taco Bell Foundation
Thompson Charitable Foundation
Toyota Motor Manufacturing WV

JA Miss Business

UK Federal Credit Union – Presenting Sponsor

JA Inspire Virtual

US Bank - Presenting Sponsor

JA Bluegrass Business Hall of Fame

UK/UK Healthcare - Presenting Sponsor

JA LLYP

UK Healthcare - Presenting Sponsor

JA ALUMNI SAY...



85%

say "JA participation influenced my belief that I could achieve my goals."



83%

say "JA played an important role in my confidence in new situations."



79%

say "JA played an important role in their professional development."

Special Recognition

Junior of Achievement of the Bluegrass appreciates every educator that allowed us to be a part of their curriculum plans over the past year. During the past year, we were able to work with teachers from across nineteen counties in central and eastern Kentucky as well as two counties in eastern West Virginia.

Schools Served in 2023-24

ANDERSON

Anderson County Middle School

BOURBON

Cane Ridge Elementary School
North Middletown Elementary School
Paris Elementary School

BOYLE

Boyle County High School
Danville High School

BREATHITT

Breathitt County High School

CLARK

George Rogers Clark High School
Shearer Elementary School

CLAY

Clay County Middle School

FAYETTE

Ashland Elementary School
Athens-Chilesburg Elementary School
Beaumont Middle School
Booker T. Washington Elementary
Breckinridge Elementary School
Bryan Station Middle School
Carter G. Woodson Academy
Cassidy Elementary School
Christ The King School
Clays Mill Elementary School
Coventry Oak Elementary School
Crawford Middle School
Deep Springs Elementary School
Dixie Magnet Elementary School
Edythe J. Hayes Middle School
Frederick Douglass High School
Garden Springs Elementary School
Garrett Morgan Elementary School
George Washington Carver STEM
Academy for Boys
Glendover Elementary School
Harrison Elementary School
Jessie Clark Middle School
Julius Marks Elementary School
Lansdowne Elementary School
Lafayette High School
Leestown Middle School
Lexington Catholic High School
Lexington Christian Academy
Lexington Traditional Magnet School
Lexington Universal Academy
Liberty Elementary School
Mary Todd Elementary School
Meadowthorpe Elementary School

Millcreek Elementary School
Morton Middle School
Northern Elementary School
Picadome Elementary School
Rise STEM Academy for Girls
Rosa Parks Elementary School
Sandersville Elementary School
SCAPA at Bluegrass
Southern Middle School
Stonewall Elementary School
Tates Creek Elementary School
Tates Creek High School
Tates Creek Middle School
The Lexington School
Veterans Park Elementary School
Virtual Learning Center
Wellington Elementary School
William Wells Brown Elementary
Winburn Middle School
Yates Elementary School

FRANKLIN

Bridgeport Elementary School
Collins Lane Elementary School
Elkhorn Elementary School
Peaks Mill Elementary School
Second Street School

GARRARD

Camp Dick Robinson Elementary
Lancaster Elementary School

HARRISON

Eastside Elementary School
Harrison County ATC
Harrison County High School
Northside Elementary School
Southside Elementary School
Westside Elementary School

JESSAMINE

East Jessamine High School
Nicholasville Elementary School
Red Oak Elementary School
West Jessamine High School

KNOX

G.R. Hampton Elementary School
Knox Central High School

LAUREL

McDaniel Learning Center
North Laurel High School
South Laurel High School

MADISON

B. Michael Caudill Middle School
Clark-Moores Middle School

Daniel Boone Elementary School
Glenn Marshall Elementary School
Kingston Elementary School
Kirksville Elementary School
Kit Carson Elementary School
Madison Middle School

MONTGOMERY

Northview Elementary School

POWELL

Clay City Elementary

PULASKI

Burnside Elementary School
Northern Elementary School
Pulaski County High School
Pulaski Elementary School
Science Hill School
Southern Elementary School
Southwestern High School

SCOTT

Anne Mason Elementary School
Eastern Elementary School
Garth Elementary School
Georgetown Middle School
Great Crossings High School
Lemons Mill Elementary School
Northern Elementary School
Scott County High School
Scott County Middle School
Southern Elementary School
Western Elementary School

WOODFORD

Northside Elementary School

West Virginia Counties

KANAWHA

Kenna Elementary School

PUTNAM

Buffalo Elementary School

Teacher of the Year

AMBER FLORENCE, Business Education Instructor at the Harrison County Area Technical Center and FBLA Advisor, has been named the 2024 JA Teacher of the Year. She was nominated by JA Volunteer, J. R. McFarland. "Amber Florence has been a tremendous advocate for Junior Achievement programming both in our school districts and throughout the state. She has been the driver behind our JA High School Heroes program where high school students participate in four lessons centered on leadership skills before going into elementary schools and team-teaching JA lessons that touch the lives of elementary students by providing financial literacy at a very young age." Laurel Martin, JA President, reiterated the impact that Amber Florence has created by offering the JA High School Heroes program to her students. "Amber Florence has been a fabulous partner who incorporates JA into her curriculum plans and provides support and accountability to her students who went into all four Harrison County elementary schools to present JA classes to first, second, third, fourth and fifth grade classes. This year, the Harrison County ATC FBLA students reached 840 elementary school students. In addition, Amber Florence utilizes two other JA programs with her high school students: JA Personal Finance and JA Inspire Virtual.

OUR VOLUNTEERS

Junior Achievement volunteers are uniquely involved in the mission of our organization, from being the primary link to children in the classroom to raising awareness, connections and vital operating funding.

Volunteers are what bring our programs to life. Volunteers embody the heart of Junior Achievement. They provide access, exposure, opportunity, and an understanding of what's ahead in the "real world" for students of all ages.

Volunteers are typically business professionals, college students, community members, or parents who want to play an active part in participating in the education of students around them. We are continually striving to work with a pool of volunteers to reflect the diversity of the communities and students that we serve throughout central and eastern Kentucky as well as several counties in West Virginia.

Accounts by the Book

Jenny Schnurr

All Critters Pet Sitters, LLC

Sherri Anderson

American Red Cross

Ashleigh Dunsmoore

American Trust

Angela Coleman

Analysts International Corporation

Charles Gregory

Assured Partners WV

Ashley Burton

Baird Private Wealth Management

Jordan Wilson

Ball Homes

Tiffany Gooch

Bank of America

Emily Martha

Tony Guynn

Tracy Taylor

Bank of the Bluegrass & Trust Co.

Chris Boaz

JJ Deans

Tom Greinke

Bluegrass Community & Technical College

Ruth González Jiménez

Beta Alpha Psi

Addison Callis

Ava Bruns

Caleb Graham

Emily Ham

John Hagan

Louis Cardosi

Maggie Hedstrom

Melissa Rannenberg

Michael Cecil

Olivia Monnin

Big Ass Fans

Gretchen Bright

Blue & Co., LLC

Amy Sandlin

Bluegrass Care Navigators

Stephen Clatos

Blue Grass Community Foundation

Lauren Parsons

BORN

Meredith Moore

Builders Exchange of Kentucky

Brandy Borchers

Cabinet for Health and Family Services

Savannah Sublette

Central Bank & Trust

Drew Alexander

Erica Parks

Michael McWilliams

Central Equipment Co.

Andrew von Hellens

Hunter Hilbert

Mason Tackett

Chase

Jennifer Hicks

Cheryl B. Mitchell, Inc.

Cheryl Mitchell

CHI Saint Joseph Health

Mary Branham

Christa Fleming

Claire Coates

Citizens National Bank

Karen Pauley

City National Bank

Stephanie Wellman

Michelle Buerger

Victoria Carling

City of Georgetown

Devon Golden

City of London

Maggie Kluesner

CLARK Material Handling Company

Cynthia Barnes

Deb Kinney

Emily Lawrence

Sherry Myers

Nicholas Federico

Commerce Properties Insurance Services

Aden Randles

Communications & Marketing Professional

Phil Jun

Community Volunteer

Amanda Cook

Andrea Arco

Brandon Keck

Chuck Siemen

Cynthia Reed

Daniel Pauley

Elizabeth King

Eric Schulte

Jackson Blankenship

Jake Viens

The Council of State Governments

Cassandra Hockenberry

Corrisoft

Jim Webb

Davis H. Elliot Company

Ashley Webb

Gabrielle Davis

Kyle Berryman

Scott Navis

Dean Dorton

Jay Swacker

Nathan Simmons

DelCotto Law

Heather Thacker

Laura Day DelCotto



Joy Kennedy
Kate McAnelly
Katherine Leigh
Leslie Melton
Mary Colvin
Matthew Sepulveda
Nancy Robertson
Rick Music
Ryan Barney
Steve Johnson
Tiffany Evans
Victoria Gaston
Victoria Knight

Department for Community Based Services

Kita Middleton
Shannon Handel

Dinsmore

Adrienne Strong

East KY Power Cooperative

Tyler Buttleman

Edward Jones

Morgan Murray

Charity Reed

Victoria Watson

Elder Care Law

Kris Ramsey

The ELIRA Group

Karrington True

EmployBridge

Brandon Handler

Expree Credit Union

Myron Moore

Farm Credit Mid America

Michael Smith

Fayette Alliance

Brittany Roethemeier

Fayette County Public Schools

Martin Schafer

Raine Minichan

Andria Jackson

Dr. Meocha Williams

Tresine Logsdon

Fidelity Investments

Farley Stephenson

Field & Main Bank

Leslie Fluke

Fizz Facial Bar

Destani Shoemaker

Madison Burchfield

Cameron Penman

Chardanay Lewis

Cole Carey

Coleman Donaldson

Deandre Penman

Ella Denton

Ellie Nash

Emerson Manning

Emily Troth

Erik Daniels

Evelyn Hill

Freddie Hostler

Gavin Williams

Hailee Russell

Hallie Guise

Hope Espy

Izzy Robinette

Jarod Suter

Jax Strautman

Jaxen Meadows

JeKyra Parks

Keshawn Thomas

Kristeon Denney

Leilani Everhart

Leyla Parks

Lindsay Bylund

Mary Cooper

Naz Gillispie

Peyton Smith

Quea Wright

Gray Construction

Abby Reynolds

Alex Sexton

Alicia Daya

Ana Arias

Caitlyn Maddox

Clayton Abernathy

Hannah Biddle

Kline Bentsen

Kyle Knipp

Lauren Rankin

Logan Hensley

Maggie Bennington

Megan Bishop

Michael Edelen

Paige Morgan

Rachel Robinson

Sydney Tobergte

Takoda Orellana

Yukie Cooper

Lachelle Parks

Anastasia Windeler

Emmalee Morton

Gray Solutions

Abby Braese

Ann Douglas

Great Crossings High School

Aaliyah Johnson

Akaius Lukow

Allaire Hanson

Anna Murphy

Annie Lawson

Ashley Rhodus

Avah Browning

Bailey Maxwell

Brenna Parker

Brie Musgrove

Cassandra Martel

Clayton Roberts

Ethan Barron

Harper Lukacsko

Jaden Dykes

Jasie Kirby

Jonas Sanneman

Julie Hurst

Kaitlyn Gill

Kennedy Wright

Kiera Bender

Kylie Moore

Lincoln Masino

Lucy McConnaughay

Madison Wesley

Noah Habash

Olivia Beltz

Peter Wagner

Peyton Broadus

Tammy Le

Thomas Smith

The Growth Coach

Shirrod Ledet

Hagyard Equine Medical Institute

Beth Roark

Julianne Cleaver

Hanna Resource Group

Christie Jackson

Harrison County High School

Addison Roe

Annabel Grose

Caitlyn Byers

Gabriela Torres

Griffin Maners

Hannah Mitts

Izzy Ratliff

J.R. McFarland

Jack Judy

Jacory Hinton

Jalyn Kelley

Jayden Ecklar

Karlie Gatrost

Kaydon Lewis

Landon Kinney

Layla Davis

Laylah Fryman

Lily Waechtler

Madalyn Carson

Malachi Barnett

Olivia Eubanks

Riley Grob

Rylan Stroub

Sara Schreiber

Sarah Combs

Savannah White

Thalea Cruz

Tyler Linkous

William Clifford

Wyatt Gaunce

Harrison Memorial Hospital

Kathy Tussey

Healthnet Aeromedical Services, Inc.

Brian Doughty

Huntington National Bank

Terry Campbell

Infineon Technologies

Justin Garagnani

JCC Group

Juan Castro

J. Mattingly 1845 Distillery

Salvador Carmona

Jackson Kelly PLLC

Mary Bryson

Jennifer Horan

Abigail Wearden

Jessamine Career and Technology Center

Addie Wood

Adela Sanchez

Alexia Buford

Alexis Williams

Ali Reed

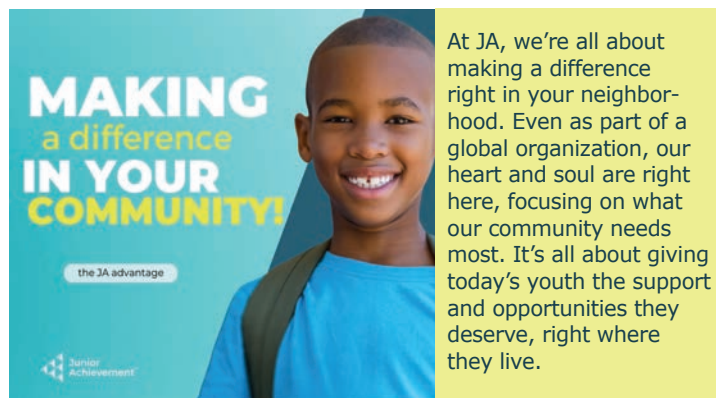
Alyssa Eldridge

Angelica Garcia

Anna Cummings

Anna Gresham

Asia Johnson

**Forcht Bank**

Acacia Dyer

April Corwin

Wendi Dizney

Kimberly Bussell

Frederick Douglass High School

Abigail Pyles

Alex Howell

Alexandria McMullen

Alivia Holloway

Anna Counts

Anniah Fisher

Arad Franco

Aubrey Young

Aubrie McKinney

Ava Boone

Avery Tavis

Blake Thompson

Brianna Woodring Garcia

Bryannah Hutchinson

Ren Hampton

Sarah Pritchard

Savyion Huggins

Sebastian Malave Carreno

Sophi Green

Steffi Loutete

T Boyd

Tyler Hunter

Unique Conway

Vanessa Martinez

Zaniah Groves

Zanyla Brown

Georgetown Fire Department

Seth Johnson

Georgetown Water and Sewer

Brittney Cooch-Henson

Derek Helms

Samantha Chisley

Gray A&E

Manasi Kalyankar

With our practical entrepreneurship programs, students embark on a journey to create real companies with tangible products. By collaborating as a team, they delve into product development, small-business finance, product marketing, and equity valuation, gaining invaluable experience.



Aubrie Allen
Avarie Jones
Blake Kanatzer
Bre King
Breleigh Jewell
Britnie Wills
Brooklyn Turner
Carley Wade
Dani Gilmet
Diana Bezzubets
Emily Tackett
Emma Leff
Hallie Sakowich
Jacob Sizemore
Jamie Becknell
Jennifer Cheser
Josephine Perryman
Kaitlyn Fletcher
Kaitlyn Ramey
Katie Williams
Katy Barkley
Keona Taylor
Lacie Minix
Liliya Prots
Maddie David
Maddie Moberly
Maria Butler
Miyah Schuster
Noah Childers
Rayleen Smith
Ruby Branan
Sara Taylor
Shayla Tkaczyk
Sierra Blitz
Sophia Danchuk
Taylor Deering
Tiara Wright
Tyeish Webb

Jessamine County Public Schools
Rachel Switzer

The Job Shop
Keyla Stubblefield

Junior League of Lexington
Shanda Correll
Myranda Elliott
Heather Kane

Keeneland Association, Inc.
Brad Lovell
Emily Pendergest
Roda Ferraro

Keller Williams Commonwealth Realty
Tricia Weiderman

Keller Williams Legacy Group
Stephanie Kelemen

KEMI
Katy Grachek

Kentucky American Water Company
Bonny Chen
Jeffrey Newcomb
Shelley Porter

Kentucky Department of Education
Veda Stewart

Kentucky Farm Bureau
Sydney Poor

Kenwood Realty Group
Kenya Woods
Kirksville Elementary School
Rylee Clark

Kismet Marketing
Jess Haney

Lexington-Fayette Urban County Government
LaShawn Barber
Shayla Lynch

Lexington Public Library
Kelli Parmley

LexLou Data Analytics
Nicole Smith

Lexmark International Inc.
Kristi Runyon Middleton
Sheri Evans Depp
Cindy Duerson
Harold Gonzalez
John Salsman
Stephen Sam
Tanya Welsch

LG&E-KU
Adam Smith

Lush Aesthetics
Jasmin Wheeler

MacLellan Services Inc.
Michael Gilbreath

Maggard Marketing Group
Kristy Maggard

The Malicote Creative Company
Kelsey Malicote

McBrayer PLLC
Lisa Hinkle

Members Heritage Credit Union
Emilie Cope
Marie Garcia Serrano
Stephanie Lamb
Vickie Charles-Hall

MiddleGround Capital
Krissie Bailey
Mike Bridge
Shelby Hundley

Minuteman Press
Garry Conley

Miss Kentucky Scholarship Organization
Elizabeth King

Moneywatch Advisors
Ramsey Bova

Next Level Academic Services
Erin Druen

People Pinnacle
Bethany Denning

PNC Bank
Austin Foreman
Yajaira West
Keely Rock

Prevent Child Abuse Kentucky
Amanda Royer

Quantrell Auto Group
Beth Pickrell

Queenslake
John Chmela

Republic Bank
Emily Chambers
Rebecca Elliott
Tamara McCain
Emily Miller
Dawn Skelton
Jeffery Ford
Kate Nelson
Kim Andrus
Nick Adams
Pauline Ramsey
Rob Ruddick

Resource MFG
Brandon Handler

R.J. Corman Railroad Group, LLC
Alex Mashni

Rood and Riddle
Lexie Conrow

Rosa Parks Elementary School
Karen Schneider

Rubicon
Nate Morris

Schrader Commercial Properties, LLC
Laura Adams

Scott County Fire Department
Michael Wilson

Scott County High School
Adison Ford
Ayden Green
Ellen Mueller
Isabella Cornett
Jillian Johnson

continued on next page

Volunteer of the Year

BRANDON HANDLER has been selected to receive the 2024 Volunteer of the Year award. Brandon Handler, who began working with JA five years ago, has volunteered in 29 classrooms at several schools throughout Fayette County. Handler was nominated by two different teachers to receive this award. Brandi Martha from Lansdowne Elementary shared that, "Brandon is the most willing volunteer. He already plans to come next year when we are finishing up our lessons. He keeps the attention in my classroom and comes knowing the program forward and backwards. You can truly see how much he loves teaching us JA!" That sentiment was also included in the nomination from Glendover Elementary School Teacher Shana Craycraft, who said, "Brandon is such a positive role model for our students. He is very engaging, knows the JA curriculum well, and has a lot of fun switching to the role of the teacher. His jokes that start each lesson really help him bond with the kids in a short amount of time. The kids enjoy him coming so much they are always sad to see him go!" Brandon Handler is the Onsite Services Manager at ResourceMFG in Lexington.

Macy Brewer
Michaela Harrod
Parker Maguire
Steven Hampton

Scott County Public Library
Lauren Ekers

Scott County Public Schools
Amanda Lewis
Jennifer Tackett
Jesseca Brown

Select Design and Construction
Letitia Maynard

Smart #110
Anthony Adams

Sotheby's
John Scott Durbin

Southern Elementary School
Shanita LeDet

SparkBase Consulting
Mike Hilton

Spy Coast Farm
Kristen Wilson
Modesty Burleson

Devin Belleville
Janey Moody
Jared Grant
Katie Kidwell
Laurent Houekpon
Lexi Bell
Madison Burchett
Michael Foley
Monique McWhorter
Nichole Lakes
Olivia Taylor
Samantha Butler
Shelbie Dockery
Thomas Crumbaugh

Sturgill, Turner, Barker & Moloney, PLLC
Katie Bouvier
Emily Bertram Pence
Madeline B. Loeffler
Savannah Baker
Megan L. Adkins
Ann Mary Quarandillo

Tates Creek High School
Addy Compton
Addyson McCubbins
Amber Meeks
Aubury Benton

Jefferson Crump
Jordyn Raglin
Jordyn Simmons
Kate Williams
Kaylee Hicks
Kennedy Fockele Powers
Kenzie Shellhammer
Kylie Provost
Lindsey Hurley
Loveli Berry
Mackenzie Foster
Mariah Spickard
Nevaeh Walker
Nichole Burke
Sahara Jimenez
Sariah Barnes
Sophia Shadeh
Taylor Marler
Tiona Dalton

Thomas Memorial Hospital
Robert Romaine

Thompson Family Dental
Amy Williams

To The Market
Jane Mosbacher Morris

Toyota Motor Mfg. Kentucky, Inc.
Andy Rudd
Carter Hall
Greg Martin
Justin Posey

Toyota North America
Amy Maddox

Traditional Bank
Ben Coates
Danielle Lewis
Dana Adamson
Kristen Bailey
Kristyn Disponette
Leigha Turner
Rebecca Waits
Stephanie Stafford
Vanessa Tuttle
Whitney Davidson
Kelly King

Trane
Wayne Smorstad

Transylvania University
Christi Hayne

Twirl Lexington
Ty McBrayer

Guide Realty
Nicole Seals

U.S. Bank
Dip Patel
Joseph Gray
Valerie Workman

University of Kentucky
Alex Reliford
Caroline Blich

Kristen McLaurin
Max Ligenza
Tanya Dvorak
Wyatt Jennings
Xander Cummings

UK CAFE Office Of Diversity
Kendriana Price

UK College of Engineering
Elizabeth Davies

UK Federal Credit Union

Sarah Baker
Corinne Bay
Taylor Bozarth
Shannon Cooper
Kristen Davis
Kristen Estep
Michelle Frederick
Caitlin Grammel
Brooke Harover
Trena Isaacs-Carrier
Spencer Johnson
Lisa Manley
Rachel Manzullo
Andrew Miller
Jamiel Miller-Dunn
Janean Newcomer
Jessica Simon
Whitney Tobias
Keana Webber
India Wilkerson
Stephen Will

UK Gatton College of Business
Shonta Phelps
William Gerken

UK Healthcare
Timothy Gaillard
Jennifer Rose
Michael Helphinstine

UK Rosenberg College of Law
Daniel P. Murphy, Jr.

UMR
Stephanie Cooley

United Way of the Bluegrass
Stephanie Carbonell-Ray

University of the Cumberland
Stephanie Thacker
Lois McWhorter

United Way of the Bluegrass
Melissa Reynolds

UPS
Adrian Howard
Charles Powers
Wesley Perry

Valvoline
Abbey Kleczinski
Alecia Whisenant
Amanda Potts
Ana Leskanich
Andy Ward
Ashley Allen

WORK READINESS PATHWAY

Junior Achievement™

INSPIRE
PREPARE
SUCCEED

Spark **MOTIVATION,**
Validate **ESSENTIAL SKILLS,**
Expand horizons for **FUTURE CAREERS.**

Encourage students to embark on the **JA Work and Career Readiness Pathway!** JA's experiential and community-based approach prepares students for success and sparks new possibilities.

Stablemate Creative, LLC
Kelly Johns

Stantec
Graham Winchester

Stock Yard Bank & Trust
Todd Sallee
Ashley Lalley
Cathy Lowe
Shawna Caldwell
Tiffanie Rowe
Alan Lunsford
Denise Caywood

Bruce Marler
Cam Walls
Chloe Benton
Domnic Arvin
D'Vaughn Flowers
Emma Manley
Ethan Waters
Gabriella Charlton
Georgia Harris
Hannah Sindelar
isabella Jones
Iyanna Davis
Jadyn Blankenship

Becca Rightmyer
Bradley Stuck
Brittany Lyden
Brooke Trusty
Bruce Tonkel
Cassie Davison
Chandler Ware
Cody Cain
Courtney Soale
Devan Schmidt
Emily Collins
Emily Lange
Eric Rossi
Field Broadbent
Graham Rouse
Hannah Paragon
Isaiah Terry
Jayme Rogers
Jennifer Cathey
John Stotz
Johnna Stewart
Kaitlyn Gibson
Kate Dunsmore
Kellye Wicker
Kelsie Head
La-Ron Garr
Laura Pentova
Lindsay Fleege
Madison Webb
Martha Renfroe
Mary Frazier
Megan Malear

Meghan Trimble
Melissa Totty
Michael Trout
Mitch Cannon
Rachel Gerrald
Rebecca Dehoag
Sam Swayze
Savannah Fielding
Shannon Stenberg
Shelbi Ray
Stephanie Sullivan
Taylor Smith
Tim Lathem
Timothy Perkey
Tina Kufour
Travis Harney
Victoria Martinez Cota
Vikas Kapur
Virginia Whittington Byrd
Wesley Goble
Whitney Graham
Zachary Rowe
Kelsey Twehues
Ginni Whittington Byrd

Valvoline Global
Mary Frazier
Hannah Paragon
Beth Wilson

Ward, Hocker, Thornton, PLLC
Jillian House



Wealth Coach of Kentucky
Rachel Elam

Weedman Lawn Care
Janette Barrington
Landon Miller

WesBanco
Megan Gayhart
Tammy Swieterman
Tonya Beckett

Whitaker Bank
Bethany Richmond
Bridgette Heiple

Caleb Manley
Cindy Dunn
Laney Woodall
Mary Cardwell
Reese Reed

WKYT
Kayla Pelphrey
Erin Graf

Woodford Theater
Keifer Adkins

Woodforest National Bank
Doran Bradford

Signature Event

Inspire Curiosity

The inaugural 6th Grade Signature Event, “Inspire Curiosity” was designed to ignite the curiosity of 3,000 6th graders and open their eyes to the myriads of possibilities waiting for them. Junior Achievement (JA) of the Bluegrass was proud to partner with Fayette County Public Schools (KY) to launch this dynamic program. JA provided curriculum and recruited businesses from around Central Kentucky to provide hands-on activities designed to captivate and inspire our students by sharing information about careers with their companies. A heartfelt thank you goes out to the more than forty businesses and organizations who participated. Their support and involvement were a critical part of the success of this event which is sure to make a difference in shaping the futures of our students, exposing them to opportunities in this region, and allowing them to discover their future career path!



BLUEGRASS BUSINESS HALL of FAME

The Bluegrass Business Hall of Fame honors outstanding business individuals whose leadership, vision and innovation have accomplished much for Central Kentucky. The Bluegrass Business Hall of Fame is a business dinner and celebration during which the newest Laureates are recognized.

This year, **R.J. Corman** (posthumously), **Jean Hale**, and **Glenn Leveridge** were inducted.

Since 1989, Junior Achievement of the Bluegrass has proudly inducted 119 Laureates into the Bluegrass Business Hall of Fame, and we are proud to recognize their drive, passion, accomplishments, and service to our community. *The 2024 event was presented by UK & UK Healthcare.*



JA Bluegrass Business Hall of Fame Laureates

1989

Caruthers Coleman
Garvice D. Kincaid
W.T. Young, Sr.

1990

Edward S. Dabney
Sr. Michael Leo Mullaney
Earl D. Wallace

1991

Walter Hillenmeyer, Jr.
Warren W. Rosenthal

1992

Harry C. Barfield
James E. Bassett, III
Jacob Hughes Graves, III

1993

J. Douglas Gay
Joseph S. Wile, Sr.

1994

Mira S. Ball
Robert H. Hillenmeyer
W. Paul Little
W. Emmet Milward
Gilmore N. Nunn

1995

Hilary J. Boone, Jr.
Bruce C. Cotton
Hal Price Headley
W. James Host
Wayne L. Smith
James H. Sweat

1996

Oliver Allen Bakhaus
Alan F. Bloomfield
Gov. Wallace G. Wilkinson

1997

Lois H. Gray
Lewis Owens
Irving Rosenstein
W.B. Terry

1998

The Dawahare Family
Ralph W. Gabbard
(Posthumously)
Bonnie Quantrell Jones
William B. Sturgill

1999

Norwood Cowgill, Jr.
Bob Slone
Dr. Lee T. Todd

2000

Gerald F. Healy, II
Anita Madden
Donald K. Poole

2001

Tommy Bell (Posthumously)
John R. Gaines

2002

Don Ball
Thomas P. Dupree, Sr.
Ralph Hacker
P.G. Peebles, Sr.

2003

Richard E. Blanchard, Sr.
Dr. Thomas Clark
Wayne Martin

2004

Luther Deaton, Jr.
Henry L. Jackson
Dr. Charles L. Shearer

2005

Samuel G. Barnes
Gov. Martha Layne Collins
Foster Ockerman, Sr.
Fred B. Wachs
(Posthumously)

2006

Gov. John Y. Brown, Jr.
Dr. John Cronin
Leonard Press

2007

Laban Jackson
Tubby Smith
C.W. Sulier, Sr.
(Posthumously)
Job D. (Darby) Turner

2008

Robert Clay
Laura Freeman
William L. Rouse, Jr.
(Posthumously)
Robert B. Trussell, Jr.

2009

Gary D. Bello
John R. Hall
Dr. Pearse Lyons
Deirdre Lyons

2010

James F. Hardyman
Dr. Michael Karpf
Ann Bakhaus

2011

Dr. Richard W. Furst
Phil Greer
Alan M. Stein
Isabel M. Yates

BLUEGRASS
BUSINESS
HALL of FAME

JUNIOR ACHIEVEMENT

2012

Terry Forcht
Davis Marksbury
W. Terry McBrayer

2013

Coach John Calipari
Nick Nicholson
Elmer Whitaker

2014

Tom Hammond
Bill Lear
Donald W. Webb, Sr.
(Posthumously)
Dudley Webb

2015

Stephen L. Grossman
Wilbert W. (Wil) James, Jr.
Dr. David B. Stevens

2016

William Stamps Farish
DeWitt T. Hisle
Holly B. Wiedemann

2017

Robert B. Congleton
(Posthumously)
Carol Martin Gatton
Mike Scanlon
Al Smith

2018

Doug Dean
William R. Embry Jr.
(Posthumously)
Lillian Press
Austin J. Simms

2019

Rufus Friday
Ouita Michel
Ray Rector (Posthumously)
Madonna & Craig Turner

2021

Drs. Eli & Mary Lynne Capilouto
Debra Hensley
Johnny Owens
(Posthumously)
Harry Richart

2023

Cathy Jacobs &
Don Jacobs (Posthumously)
Frank Penn
Nick Rowe

2024

R.J. Corman (Posthumously)
Jean Hale
Glenn Leveridge



BOARD OF DIRECTORS

Daniel P. Murphy, Jr., Chair – UK College of Law
 Dana Adamson, Traditional Bank*
 D.R. Ball – Ball Homes**
 Mary Branham, CHI Saint Joseph Health*
 Mike Bridge - Middleground Capital
 Kimberly Bussell- Forcht Bank*
 Salvador Carmona – J. Mattingly 1845 Distillery
 Sheri Evans Depp – Lexmark International
 Austin Foreman – PNC Bank
 Timothy Gaillard – UK Healthcare
 Kelly M. Johns – Stablemate Creative, LLC
 Brad Lovell – Keeneland
 Kate McAnelly – Retired, Fayette County Schools
 Alex Mashni – R. J. Corman Railroad Group
 Andrew Miller – UK Federal Credit Union
 Scott Navis– Davis H. Elliot Company
 Kate Nelson – Republic Bank
 Jeffrey Newcomb- Kentucky American Water*
 Andy Peterman – Valvoline**
 Justin Posey – Toyota Motor Manufacturing Kentucky/ TMMK**
 Todd Sallee – Stock Yard Bank & Trust
 Amy Sandlin – Blue & Company
 Nicole Seals – Guide Realty
 Adam Smith – LG&E/KU
 Karrington True- The ELIRA Group
 Jordan Wilson – The McIntosh Group, Baird Private
 Wealth Management

* Began service in 2023

**Concluded service in 2024

STAFF

Laurel Raimondo Martin, President
 Joanna Weaver, Office Manager
 Cecelia Reilly, Program Manager, JA BizTown/JA Finance Park
 Savannah Combs, Program Manager, Classroom Programming
 Catherine Pauley, Program Manager, Classroom Programming

Your Name is Important! We have carefully reviewed the names listed in this report. However, in listings of this length, errors may occur. If your name has been omitted, misspelled or incorrectly listed, please accept our apology and bring the error to our attention so that we may correct our records.

Contact Junior Achievement of the Bluegrass:
 859-219-2423 or madelyn@jalexington.org.



**Junior
Achievement™**
of the Bluegrass

JA BizTown®

JA Finance Park®

Our office is located at:
2420 Spurr Road, #150
Lexington, KY 40511
859-219-2423